



35 Years  
Supporting  
Seriously Ill Children

ROALD DAHL'S  
**marvellous**  
children's charity



# 35 Years of Roald Dahl's Marvellous Children's Charity



As Roald Dahl's Marvellous Children's Charity marks its 35th anniversary, this milestone is both a celebration of the extraordinary difference our Roald Dahl Nurses have made to thousands of seriously ill children and families, and a moment to look forward with ambition to expand our impact.

Over three and a half decades, the charity has grown in reach, influence and credibility within the health system, and this anniversary year provides an important platform to accelerate our plans to establish more Roald Dahl Nurses, so that many more children who need it can receive the joined-up, compassionate and expert support they urgently need.

**Children with medical complexity (CMC) are a growing and increasingly visible population within the health system.** Advances in neonatal and paediatric medicine mean more children are surviving serious illness and living longer with multiple, long-term and often rare conditions.

While this is a remarkable achievement, it also means that more families are managing highly complex care, involving multiple medications, specialist equipment, frequent appointments and ongoing clinical decision-making. Everyday life becomes a careful balance between caring responsibilities and navigating an increasingly complicated healthcare landscape for children whose needs do not sit neatly within a single service or pathway.

At the same time, pressure on the NHS continues to intensify. Services are facing rising demand, and significant operational pressures, particularly across community, specialist and children's services.

For families, this frequently results in fragmented care. Children with medical complexity may be seen by multiple hospitals, consultants and community teams, with limited coordination between them, resulting in delays, confusion and avoidable hospital admissions.

**This is where Roald Dahl's Marvellous Children's Charity plays a critical role.** By establishing Roald Dahl Nurses who are embedded into the system, the charity helps bridge the gaps between hospitals, community teams and families, providing consistent, expert coordination for children with the most complex needs.

Our nurses work alongside clinicians, navigate multiple care pathways, advocate for families, and ensure care is joined-up, timely and centred around the child, reducing avoidable crises and supporting parents and carers through the most challenging moments in their lives.

We are so proud that this year we have reached over 250 Roald Dahl Nurses working across the UK. These highly skilled, expert professionals are changing the experience of over 50,000 children and their families.

**And, it is only possible because of the community of supporters behind us. The runners, cake-bakers, organisations, grant-givers and individuals, who give so generously.** As we look towards the future, and gain more understanding each day of how many more children and families need our support, we know that we can only reach them with the marvellous people who stand side-by-side with us.

Thank you to everyone who has supported us so far, and welcome to everyone joining us. Together, we can secure more marvellous Roald Dahl Nurses for seriously ill children in the UK.

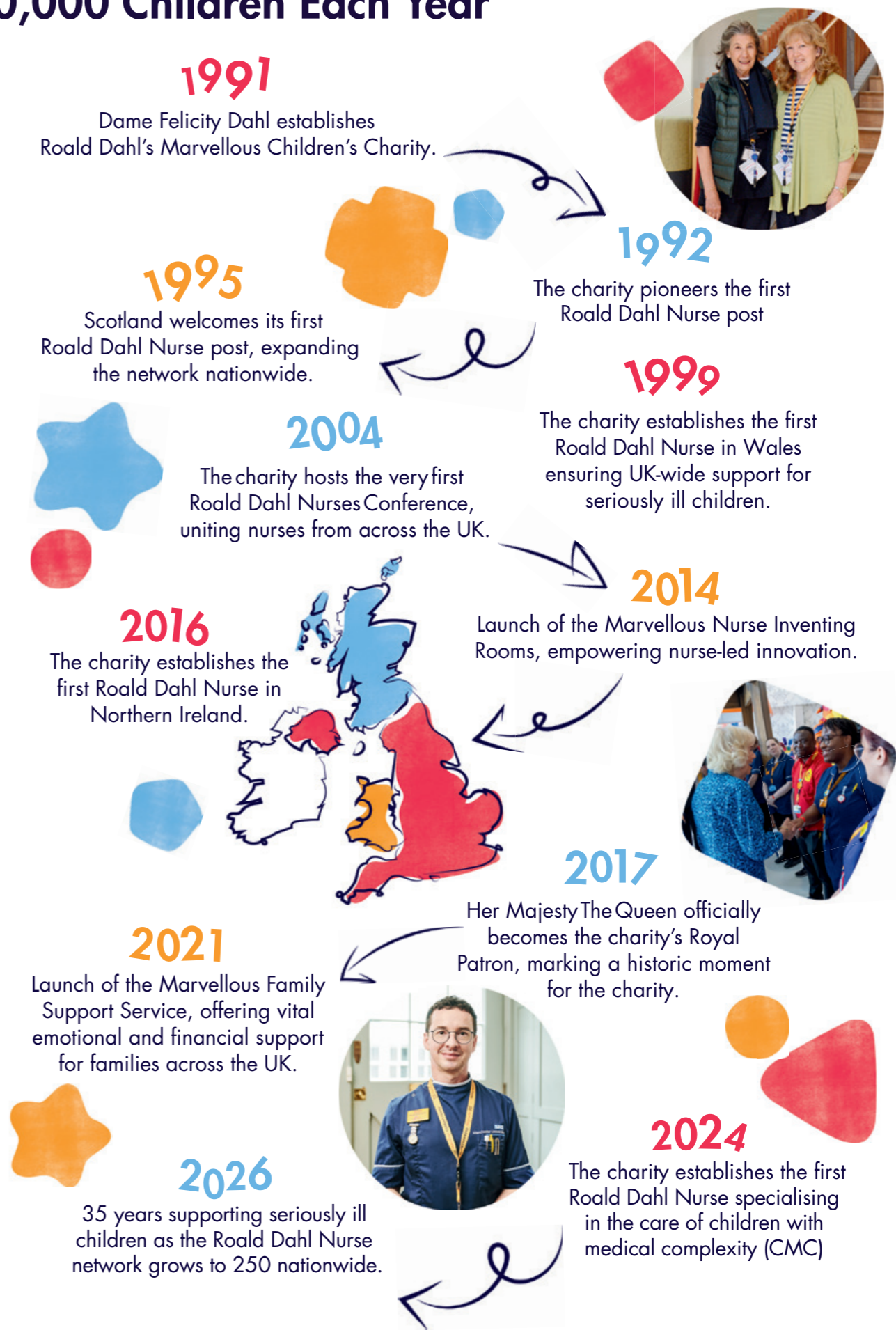


**Louise Griev**  
Chief Executive  
Roald Dahl's Marvellous  
Children's Charity



**Donate for  
More Marvellous Nurses**

# The Marvellous Journey to Supporting 50,000 Children Each Year



# From 1 to 250 Marvellous Roald Dahl Nurses

Roald Dahl's Marvellous Children's Charity provides specialist nurses and support for seriously ill children. The charity was established in 1991 by Roald Dahl's widow Dame Felicity Dahl. Working in partnership with NHS Trusts and Health Boards across the UK, Roald Dahl Nurses are Clinical Nurse Specialists, highly trained and experts in their fields, providing support, information and practical care for seriously ill children and young people. Their dedication in this crucial role delivers safe, effective, high-quality patient care.

Roald Dahl Nurses bring diverse strands of care together to provide a holistic and family-centred approach, as well as emotional support and expert clinical practice. It's no surprise that evidence shows the Roald Dahl Nurse role conserves resources, leading to greater efficiency and better outcomes.

**Over 250**  
**Roald Dahl Nurses in posts**  
**across the UK, supporting**  
**more than**  
**50,000**  
**seriously ill children.**

## Oliver and His Roald Dahl Nurse Shannon

*"I don't think anyone can understand what our Roald Dahl Nurse Shannon did for us, or how grateful parents like us are for this kind of specialist support."*

Oliver's mum, Kathryn.

Kathryn met Roald Dahl Nurse Shannon when her baby son Oliver was admitted to hospital for nine weeks. Investigations and surgeries had been ongoing since Oliver's birth, as whilst he was the sweetest and happiest of babies, he was not developing or thriving as expected. This was a huge worry for his parents Kathryn and James. "The nurses on the ward were wonderful, but there were different nurses each day, and we were seeing so many teams and felt nothing was being decided – we were being passed from one specialist to another. We felt lost and afraid. But then Shannon came along and was speaking to all of the teams for us, finding out what they could do, what they needed, what were the next steps. There was a consistency to it. She was clearly determined to get the answers we needed, and to find out what was going to happen next. And if we had questions or were confused, Shannon was on it."

*"It changed the whole experience, the whole journey. She gave me and James the energy and the fight to keep going."*



# The Roald Dahl Nurse Specialist Role

Roald Dahl Nurses are a vital lifeline for seriously ill children and their families. Roald Dahl Nurses support children and young people affected by complex medical conditions, and they have diverse specialties including rare diseases, sickle cell, neuro-muscular conditions, and epilepsy, among many others. These conditions include progressive diseases without curative treatment options, as well as irreversible but non-progressive conditions causing severe, lifelong disability.

The common thread is that the children and young people looked after by Roald Dahl Nurses are all living with complex lifelong conditions, and the nurses are highly skilled in managing clinical care alongside joined-up, solution-focused care plans that are holistic to each child and family they look after.

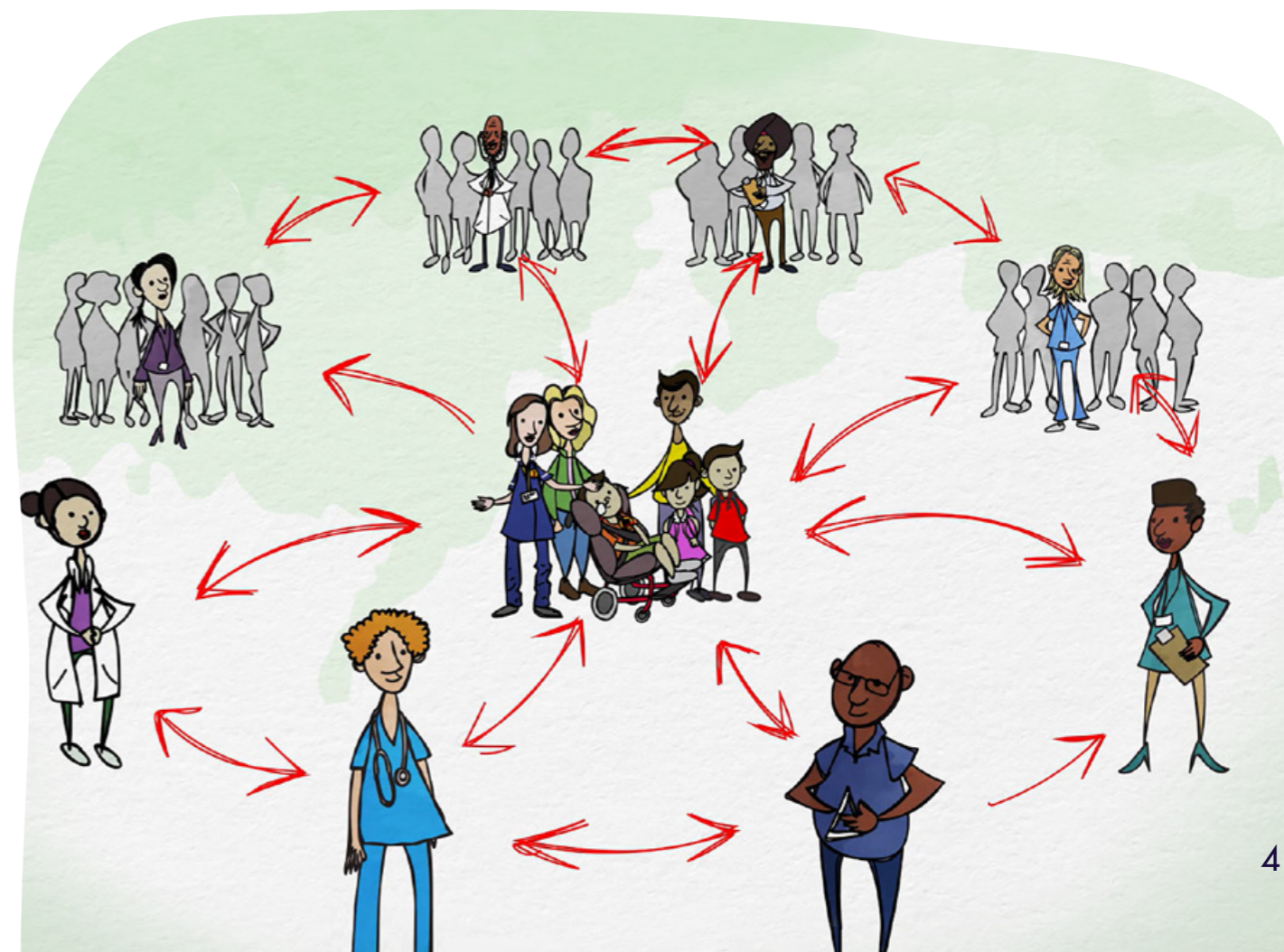
*"It's all about coordinating care, being able to support families, encouraging research, to be empathetic and compassionate... you've got to be multifaceted to do this role, really, it's unique."*

Roald Dahl Nurse

*"These nurses provide not just medical care, but also emotional support, advocacy, and guidance through some of the toughest times."*

Parent

Watch our animation about the role of a Roald Dahl Nurse.



# The Difference We Make in Families' Daily Lives, and the Change We Drive Across the Systems They Rely On

**96.3%**

of Roald Dahl Nurses report that their specialist support directly reduces patient stress, anxiety and feelings of isolation.<sup>1</sup>



*"Knowing my child and what will work for her, liaising with hospital professionals and community to get what my daughter needs and always being there for a chat and advice when I need it."*

Parent

**Over 85**  
NHS partnerships



**9 out of 10**

Roald Dahl Nurses report that their specialist support directly reduces emergency and unplanned hospital admissions for the children and families they support.<sup>1</sup>

## Outcome: improved quality and experience of care<sup>2</sup>

Roald Dahl Nurses provide a trusted single point of contact for families and professionals, coordinating care across services and beyond traditional healthcare boundaries. Families value their responsive, flexible and intensive support, and the practical advice and reassurance that helps ease anxiety, because, as parents tell us:

*"Until you are in the impossible position where you are facing a potential lifelong journey with your young child, it's hard to comprehend the help or support needed. But Roald Dahl Nurses provide an invaluable service to help families during their most difficult times."*

## Outcome: increased access to holistic family-centred care

Family-centred care puts children and their families at the heart of every decision, recognising them as equal partners in care, and Roald Dahl Nurses enable this. They listen to and value families' perspectives and choices, and actively incorporate their knowledge, values, beliefs and cultural backgrounds into how care is planned and delivered.

Roald Dahl Nurses make sure families receive timely, accurate and unbiased support to help them fully understand their child's needs and take part in decisions with confidence. Crucially, this approach also brings families, clinicians and leaders together to shape services, ensuring care is designed and delivered around what truly matters to children and the people who love and care for them.

### Family-centred care is embraced as a core responsibility and value by Roald Dahl Nurses.

Given the complex needs of children and young people in the caseload of a Roald Dahl Nurse, a traditional patient-centred care approach would be inappropriate.

## Outcome: improved efficiencies and cost effectiveness

Families who have averted having to access the following services due to timely contact with their Roald Dahl Nurse:

Consultant appointment	↓ 52.7%
Emergency visit to A&E	↓ 42.3%
Urgent visit to GP	↓ 40%
Admission to hospital	↓ 37.5%

**Roald Dahl Nurses act as proactive change-makers,** introducing practical interventions that reduce waiting times, A&E visits, hospital admissions and length of stay, while improving efficiency. They provide rapid access to the right advice, services and clinicians, including timely medication guidance and earlier intervention when concerns arise. This helps to reduce risk and ease family anxiety. By building and coordinating multidisciplinary teams, they avoid duplication, reduce missed appointments and deliver more cost-effective care.

## Outcome: improved leadership and innovation in nursing models and training

The work of Roald Dahl Nurses is delivered at an advanced level of practice, combining expert clinical reasoning, complex decision-making and critical analysis to provide high-quality, holistic, family-centred care in a sustainable and cost-effective way. Because many children do not fit standard pathways, these nurses rely on professional judgement, leadership and innovation to navigate clinical uncertainty and improve outcomes. A significant part of their role also involves service development to reshape existing pathways and design new services through business cases, funding bids and multidisciplinary collaboration. A defining feature of the Roald Dahl Nurse role is its multi-agency focus. While based within a single organisation, nurses actively connect services and professionals across boundaries, building and sustaining networks to improve care pathways for families. **This blend of non-clinical leadership and cross-system coordination creates a distinctive and highly effective model of nursing practice.**

# Investing in Roald Dahl Nurses

## Training & Professional Development:

Specialist programmes to strengthen clinical skills, leadership and innovation, including Makaton communication training, specialist sleep training and leadership development.

## Wellbeing Programme:

Structured support to protect nurses' mental health and resilience, including peer support, group sessions, reflective practice and practical wellbeing activities.

## Roald Dahl Nurse Network:

An active online network and bi-annual conference bringing together the UK's largest group of paediatric nurse specialists to share learning, spread innovation and tackle inequalities in children's healthcare.



*"The support, resources, training, teaching, and opportunities for networking have helped me grow in confidence, skills, and knowledge. I've felt empowered, inspired, and part of something truly special and something I am incredibly proud of. Attending the Roald Dahl Nurse Conference last year was a real highlight."*

Roald Dahl Nurse



## Evolving Needs, Growing Numbers and Changing Stories: Children With Medical Complexity

In an era marked by unprecedented advancements in obstetric and paediatric medicine, we find ourselves at a crossroads where the survival of children with previously unsurvivable or significantly life-limiting conditions is now a reality. **This triumph, however, unveils a complex challenge: ensuring these children and their families attain a quality of life that goes beyond mere survival.**



*"...I do not think that there is any way the service at [hospital] will be able to function effectively without the Roald Dahl Nurse. If anything, my opinion would be that we need more than one or two of them. They are highly appreciated."*

Clinician

As far back as 2011, children who 'are medically fragile and have the most intensive health care needs' (Cohen et al., 2011) have been recognised, but the number of children, including in the UK, remains unknown.





**Children with medical complexity (CMC) live with lifelong conditions and are high health care users. But these children often face a daily reality that is incomprehensible to many: the inability to walk, talk, eat, or take part in activities that define childhood, coupled with the looming shadow of life-limiting diagnoses.**

They are not only under the care of multiple specialists, frequently spanning diverse NHS Trusts and healthcare organisations, but they also face extensive needs beyond traditional healthcare. Navigating the healthcare system and coordinating their comprehensive care is an extraordinary, complex and exhausting endeavour for their families.

Their families take on significant responsibilities and may also be liaising with other services: emotional, psychological, or financial needs, or support in the occupational, physiotherapy, speech and language, dietetics, educational, housing and social care spheres.

Roald Dahl's Marvellous Children's Charity has gained insight directly from families and understand that children with medical complexity need to be seen, counted and truly understood. That their growing, highly individual needs are not being met by the services that surround them. **Roald Dahl Children with Medical Complexity (CMC) Nurse Specialists can help bridge the gap.**

*“Having a complex needs child is often very lonely. You feel invisible, forgotten, not listened to.”*

Parent

**81%**

**“Sometimes I feel like we live on a rollercoaster: we are in crisis when my child is acutely ill. But coping well when things are stable.”**

**80%**

**“Our family gives up things because of our child's illness.”**

**75%**

**“Fatigue is a problem for me because of my child's illness.”**

3

## Everybody's Patient, Nobody's Responsibility<sup>4</sup>

In the face of such complexity, the traditional healthcare framework, often fragmented and siloed for children with medical complexity, falls short of addressing the multifaceted needs of these children and their families.

*“It's exhausting trying to navigate through it [...] I am his voice, which means knowing when something isn't right, when he's not well or something is agitating him, so I push to be heard [...] These children are unique and don't follow the rulebook, they write their own and you have to listen to them”.*

Parent



Navigating the healthcare landscape for parents of children with medical complexity presents an array of daunting challenges. Central to these challenges is managing their child's condition, but also generates a feeling of abandonment as their requests for comprehensive support are ignored.

Parents of children with medical complexity can feel abandoned by an overstretched health system. From the point of diagnosis and throughout their child's care, many do not feel adequately emotionally supported and are left isolated, fighting to coordinate their child's care while coping with the daily realities of complex needs. Although clinical care rightly focuses on medical treatment, families too often lack the emotional and psychological support they urgently need as they face life-changing diagnoses and the ongoing demands of caring for a seriously ill child.

For families of children with medical complexity, continuity of care is vital, yet too often missing; parents are repeatedly forced to explain their child's diagnoses, history and needs to an ever-changing group of professionals, alongside frequent and disruptive emergency admissions. Without a single, consistent care lead, support becomes siloed, communication breaks down and pathways fragment, creating gaps in care that not only increase stress for families but can directly affect a child's wellbeing and quality of life.

Clinicians recognise the current disjointed nature of the care provision for children with medical complexity and the urgent need for reform in how their care is conceptualised and delivered. **Across services, there is a call for a more structured, integrated approach to care that transcends traditional service models.**



## Life Without a Roald Dahl Nurse

### Pippa's Story

Pippa was born with Down's Syndrome and after a short stay in special care, was discharged and came home the happiest of newborns.

Weeks later though, when Pippa was just five months old, her parents noticed unusual movements, small and repetitive. It transpired their daughter was having clusters of spasms in what was diagnosed as a type of childhood epilepsy called West Syndrome.

"It has been a massive learning curve for us. Not just getting to grips with her medical diagnosis and her needs – she is under the renal team, haematology, gastroenterology, and neurology – but understanding that the NHS isn't joined up," says Pippa's mum, Danielle.

*"Having an experienced specialist working with us would be amazing. It feels like a pipe dream, but I have read about how Roald Dahl Nurses work and so I know the difference that they can make."*

Pippa's mum, Danielle.

"I understand that this is what parents like me simply have to do – but also understand that with specialist help from a Roald Dahl Nurse parents can be supported by someone who coordinates the care and appointments, who advocates for the patient and family, and who makes things happen.

"I have been doing this for 11 years and I can't tell you how wonderful it would be to be able to have one person I could call on and who would be there for Pippa and help us navigate this journey and cope with all the different worries we live with".

## Roald Dahl Children with Medical Complexity (CMC) Nurse Specialists

Recognising the gap in care provision for children with medical complexity, Roald Dahl's Marvellous Children's Charity took a pioneering step in 2023 with the launch of a dedicated programme, building on our established Roald Dahl Nurse community already working with this cohort of children.

The groundbreaking network of Roald Dahl CMC Nurse Specialists is trailblazing the improvements to care provided to children with medical complexity and their families. With 11 Roald Dahl CMC Nurse Specialists now in post across NHS Partnerships, there is a growing body of evidence to support their impact on both the children and the systems of care around them.

Evaluation conducted by Sheffield Hallam University in 2021, demonstrated that the Roald Dahl Nurse Specialists not only improve the quality of care and families' ability to manage complex needs, but also significantly reduce pressure on acute hospital services.

**The study found, for example, a halving of consultant appointments, around a 40% reduction in emergency department and urgent GP attendances, and a reduction in hospital admissions of more than a third.**

*"Before we had our Roald Dahl Nurse, I felt I had no one to turn to and was navigating my daughter's care totally alone, feeling like I was the one linking her care together. Our Roald Dahl Nurse has taken that burden away and sorts of medication, answers questions for us and is always at the other end of the phone."*

Parent

*"Until you are in the impossible position where you are facing a potential lifelong journey with your young child, it's hard to comprehend the help or support needed. But the Roald Dahl Nurses provide an invaluable service to help families during their most difficult times."*

Parent

By applying this model of care to Roald Dahl CMC Nurse Specialists, they emerge as central figures, with the potential to embody the gold standard in care for children with medical complexity. These specialist nurses extend their care beyond the conventional medical framework, weaving a comprehensive network of support that addresses the medical, emotional, and social fabric of each child and their family's lives. Roald Dahl Nurses guide families through a complex health and care system by working across disciplines and understanding the realities of their lives, providing joined-up, tailored support that spans medical care, wellbeing, education and social services, so no family has to face their journey alone.

**Roald Dahl Nurses embody the essence of hope and advocacy, offering not just clinical care but also a compassionate presence that accompanies families through every challenge and milestone. This commitment to excellence, empathy, and holistic support reflects our mission and vision for a more integrated, empathetic approach to paediatric healthcare.**



# Defining Children with Medical Complexity

Until recently, the definition focused on children’s diagnoses, functional limitations, care needs and patterns of healthcare use, but without a single definition or way of tracking children who fall into this category, there has been no overarching model of care or way of tracking numbers of children who need it.

This has now been updated following work led by Roald Dahl’s Marvellous Children’s Charity in partnership with Costello Medical, which brought together more than 50 clinical experts from across primary, secondary and tertiary care to agree a single, practical definition for children with medical complexity through a national Delphi panel.<sup>5</sup>

From March 2026, the agreed definition is to be applied consistently across NHS trusts and within patient records, enabling a more robust understanding of population need, outcomes and effective models of care. This work has informed a national submission to the NHS coding body and has led to the approval of a new dedicated SNOMED CT (Systematized Nomenclature of Medicine Clinical Terms), a clinical code that practitioners will use to count and track children living with medical complexity, marking an

“The charity has helped us so much over the last year through difficult times, I really appreciate it.”

Parent





important step forward in recognising and supporting them.

Long-term, this will help future care planning, and will address systems not currently designed to support the complexity of care. This model of CMC care will require further development to meet the needs of each individual child and their families. Roald Dahl Nurses are uniquely ready to provide the holistic care and approach needed.

This improves family wellbeing and the quality of care, while also making services more efficient. Evidence shows reduced hospital admissions and emergency use, and better access to routine and preventative care (including dental, eye care, immunisations, and earlier support such as occupational therapy, speech and language therapy and dietetics).

## Output from the Delhi Panel: A Definition for CMC in England

At least four criteria from three domains (mandatory criteria bolded)

<ul style="list-style-type: none"> <li>• <b>Presence of chronic/lifelong condition(s)</b></li> <li>• Presence of a condition which is severe and/or associated with medical fragility</li> <li>• Involvement of multiple organ/health systems (at least two organs affected)</li> </ul>	 <p><b>Clinical Conditions</b></p>	<ul style="list-style-type: none"> <li>• Substantial use of healthcare (e.g. complex medical regimens, multiple surgeries, specialised interventions)</li> <li>• Involvement of multiple secondary and tertiary medical specialties in care</li> <li>• <b>Requirement for a coordinated and multi-disciplinary approach as part of ongoing care, including involvement of AHP'S</b></li> </ul>	 <p><b>Healthcare Resource Use</b></p>
<ul style="list-style-type: none"> <li>• Severe functional limitations (eg. mobility-related, communication-related etc.)</li> <li>• Dependence on technology (e.g. respiratory support, airway adjunct, feeding tube, mobility support, etc.)</li> </ul>	 <p><b>Functional Limitations</b></p>	<ul style="list-style-type: none"> <li>• High burden of daily home care</li> </ul>	 <p><b>Wider Needs</b></p>

# Meet Billie and Roald Dahl Nurse Molly

“We nearly lost her so many times,” remembers Gary, Billie’s father. “Billie was 15 months old before she came home with her ventilator and the tracheostomy, and all the training that came with this...”

Life with a new baby is an exhilarating ride at the best of times. The newness and upheaval of it all. The way it impacts on all of the day to day. But life with a new baby through the worst of times can be even more of an emotional rollercoaster that few parents can be prepared for.

That’s how Gary describes the first year of life with their baby daughter Billie. She arrived 13 weeks early weighing in at just 790g (or 1lb and 11 oz) and with undeveloped lungs and needing both emergency bowel surgery and then heart surgery. Only just 18 months, Billie has already been diagnosed with chronic lung disease, tracheobronchomalacia, mild hearing loss, delayed development and epilepsy.

Early on in Billie’s life, the family were moved from their local hospital to a paediatric intensive care unit in London. A total of 11 respiratory arrests led to 11 CPR events. Then there were the infections and the sepsis.

**Today, aged 18 months, Billie is a cheeky, funny toddler who loves attention and is learning new things every day.**

“Molly knitted things together, and supported our move home, coordinating the care we needed. She was such an important person to have in our life when we and Billie needed support most.”



## Meeting Their Roald Dahl Nurse Molly

But they are here and happy as a result of nursing care, and in particular as a result of the brilliant specialist care they received from their Roald Dahl Nurse Molly.

The family met Molly in December, and she is, they say, a nurse who gets things done.

“We were at that stage, under 10 to 15 different teams, repeating the same story, or asking the same questions or chasing the right person to sort a problem. Molly cut through all that and was the person to speak to – the person who’d speak to everyone else on our behalf.”

# Family Support Is Essential, Not An Optional Extra

Roald Dahl Nurses recognised early on that to support the child, you need to support the whole family. Born out of many conversations, we developed our Marvellous Family Support Services which not only provide practical and emotional support to the families when they need it most, but also improve the efficiency and efficacy of the Roald Dahl Nurse role. Every family under the care of a Roald Dahl Nurse can access services that impact their daily lives.

**£976,816**

**in benefits expected to be unlocked for families in 2025/26.**

**96.7%**

**of Roald Dahl Nurses said families' finances have likely been affected as a result of their child's condition.**

## Financial Support

Connecting families to specialists in benefit entitlements, and helping them complete complicated, long forms to access them.



## Online Family Workshops

The Marvellous Family Workshops, launched in 2025, are available for families supported by a Roald Dahl Nurse. Recognising that having a child or sibling who is seriously ill can be isolating, these bespoke sessions give young people and their siblings the chance to meet others who truly understand, make new friends, and build a strong, supportive community.

**We are proud to have joined the Digital Services Consortium (DSC), an alliance of twelve charities, which is helping to get families online, get connected, and access life-changing support online.**

## Emotional Support Services

Caring for a child with a lifelong, complex condition can be emotionally challenging. We offer families a Family Support Advisor to provide reassurance, guidance, and access to support networks. For those needing more in-depth support, our therapeutic counselling service with a qualified counsellor offers a safe space to explore feelings, navigate challenges, and build resilience, helping to reduce the stress and anxiety of caring for a seriously ill child.



**Over 150 hours**

**of emotional support and advice provided for families in 2025-26.**

**83%**

**of Roald Dahl Nurses have signposted families to access the charity's emotional support services.**

**99.4%**

**of Roald Dahl Nurses report that a child's complex condition has a significant impact on their family's wellbeing.**

**77.3%**

**of families say their Roald Dahl Nurses reduces their stress and anxiety.**





## Every Seriously Ill Child Deserves a Roald Dahl Nurse

As Roald Dahl's Marvellous Children's Charity grows its network of Roald Dahl Nurses, we see every day how they deliver care, advocacy and coordination around each child, creating a trusted circle of support that gives families space to breathe, to cope, and to be a family again.

For children whose lives are shaped by multiple conditions and constant appointments, this specialist support means fewer crises, clearer pathways through care, and more precious time making memories together.

“The addition of a Roald Dahl Nurse has greatly improved the quality of service we offer to our patients and their families, and feedback from these families has all been extremely positive.”  
Clinician

“We had no idea what a Roald Dahl Nurse was or what it would mean to us when we met Lucy. But within days everything about our experience of her care changed. It was so many little things that made such a huge difference.”

Ada's Dad, Gary

Watch Ada's film here



## A Note from the Chair

### Join our community of supporters

Our ambition is that every child with medical complexity will have a highly-skilled Roald Dahl Nurse beside them as a gold standard of care, from diagnosis through to the transition out of children's services, so no family has to walk this journey alone. This future can only be built through a community of supporters who believe these children deserve better. Every investment in a Roald Dahl Nurse creates a powerful ripple effect, reaching hundreds, and often thousands, of children, parents, carers and siblings, helping families spend more time together.

### Looking Ahead to the Future

Building on the strong and growing evidence that Roald Dahl Nurses deliver measurable improvements for families and for the wider health system, the charity has commissioned further independent research with Edge Hill University to deepen understanding of their impact. It will also evaluate the next evolution of the role: specialist neonatal Roald Dahl Nurses, supporting babies with medical complexity through strategic Neonatal Intensive Care Units, and the associated Operational Delivery Networks, to provide comprehensive, structured support from day one. The charity is also receiving pro-bono support from Frontier Economics to evaluate the financial effectiveness and the Social Return on Investment of the Roald Dahl CMC Nurse Specialist role and model of care, to robustly evidence the impact within health systems to achieve the best outcomes for as many children as possible. Alongside this, through championing the introduction of the SNOMED CT code we have ensured children with medical complexity will now be counted, so they are no longer hidden between services and spreadsheets, and no longer without a voice in a system that has too often failed to see the full reality of their lives.

I hope you will join us.

Carolyn Bradley  
Chair of Trustees



Join us to support seriously ill children through more marvellous nurses.





## Help reach more children with more marvellous Roald Dahl Nurses

We need your support to establish more Roald Dahl CMC Nurse Specialists. Your donations can help ensure that more children with medical complexity have access to the vital specialist care of a Roald Dahl Nurse.

**Donate at:**  
[roalddahlcharity.org/donate](https://roalddahlcharity.org/donate)



@roalddahlcharity



@roalddahlcharity



@roalddahlcharity

Phone: 01494 890 465

Email: [enquiries@roalddahlcharity.org](mailto:enquiries@roalddahlcharity.org)

Roald Dahl's Marvellous Children's Charity is a registered charity in England and Wales (1137409), Scotland (SC054293). A company limited by guarantee. Registered company in England and Wales (7340518).

Registered address: 17 Chiltern Business Centre, 63-65 Woodside Road, Amersham, HP6 6AA. Roald Dahl is a registered trademark of The Roald Dahl Story Company Ltd.



FUNDRAISING  
REGULATOR